

## **EJECUTIVE SUMMARY**

An Objective to have the Engineer Computations Systems is to arrive to the practice of the all obtain Knowledge during the academy, scientific, technical and humanistic preparation in the University and the form to have this objective is through the application of knowledges in the design and development in software projects in order to resolve the societie's problems.

This investigation's work is make according to the design, development and the implementation of a Count System for the products enterprise's sale. Cronos Consultora Especializada S.C.C. is in Ibarra region, Imbabura city.

This work speaks about the next chapters:

### **1.- VIABLE STUDY**



---

In this chapter we make a rapid description about the Enterprise necessities in order to give resolve the necessities with Count System in plan.

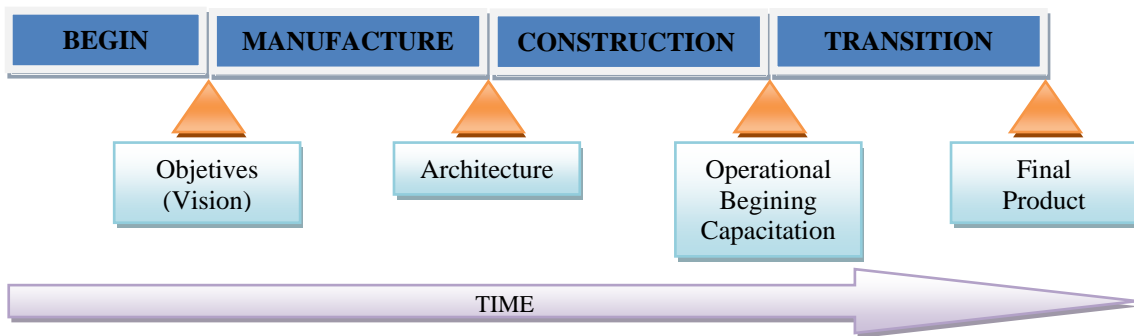
Also we make a description about the Count System characteristics, also it was formed the development group, the plan's cost and the advantages that it plan give us.

In order to charge a good financier information it's necessary a count system. It's necessary for the clients, also it disminish the diary load of work and so to save time keeping the information on time: The reports shop the count in order to

charge and pay, active secures balances, etc. through the analysis of the information the manager to investigate the form in order to harmonize the different areas and so to better the rent of the enterprise.

The System Count for the Enterprise CRONOS S.C.C. is a viable plan because the application must be establish in all business or enterprise such us drugs store, toys store, hardware shop, bazaars, boutiques, and in different enterprises.

In order to analyse this plan we use the RUP methodology, this plan is formed by four aspects such as: Begin, Manufacture, Construction and Transition.



### **1.1.- Characteristics about the proposer System**

The most characteristics about the proposer System:

- Safety about the information in the moment that make the transactions.
- Flexible and well because this plan use software tools free and it is php, and also use free tools that is PostgreSQL.
- The Enterprise CRONOS will had a count application and so the Enterprise will be automatized.
- The application permit to the user accedes to reports in order to make managements analysis.

- This plan also will facilitate to the enterprise to have in the day the tributaries obligations.
- Will permit us the CRONOS Enterprise S.C.C. to show a good image and so we will attend in a rapid form and automatic.

## **2.- ANALYSIS ABOUT THE SYSTEM**



---

This chapter speaks about the study and analysis of the composition of the Enterprise, in order to have a clear idea of the function of this Enterprise, and this is the reason that we make the flux dates diagrams and the case of use diagrams in order to have a graphic tool that it help us to establish in good form what is the form to structure the Count System. Also this plan give us the requeriments that we need to the System will be development and augmente in this enterprise.

CRONOS is a enterprise, the objective is to sale and the commercialization of real estate and services, in order to satisfy the client necessities and so obtain economics benefits.

In the present time this enterprise don't have an information toot for carry the accounting in automatic toot for carry the accounting in automatic form, the financier information in the present is in electronics Excel sheet of paper it's not good.

### **Identification of the manuals process**

In the present in the Enterprise CRONOS S.C.C. don't have any documentation about the process that we makes. This information we make in manual form in Excel sheet of paper of the next form:

- Registration certificate about the count in order to pay (obligation of the Enterprise with clients).
- Registration certificate about the count in order to collect (obligation of the clients with the enterprise).
- Registration certificate about the small cash.
- Registration certificate about the General cash.
- Registration certificate about the banks.
- Registration certificate about the the product's cost in the enterprise.
- Registration certificate about the sale's manual facturation.
- Registration certificate about the maked sales.
- Registration certificate about the stock products.
- Registration certificate about the clients and sellers in the enterprise.
- Registro de Información de Clientes y Proveedores de la empresa.

### **3.- GRAPHIC DESIGN**



---

In This part we speak about the Count System, after the analyze and examinat this process we must be to make a prototip with the forms that have this system module. Also we make a graphic design about the classes, about the sequence, about collaboration, about the components and the despleat diagrams in order to have an idea. Also we make a Dates base they are use in the Count System.

The Coun System development in the enterprise CRONOS S.C.C. is an parametrizable application and this must be use in all the enterprise or business that have stocks of products and services. It's a Count System use only in the private commercial place.

Here we development a module, in this module we have the principals configurations such as:

**Parametrization.-** to permit us to keep all the important dates of the Enterprise such as:

RUC, design, name, address, e-mail, pone, fax, kardex in use, cashier RUC, cashier name, enterprise's identification and name. Also it has a botton that help us to modify the bad dates.

Also we can to make the next actions such as:

Manage Count's plan, Manage Retention's code, IVA parameter, retention's parameter, Externs documents, final clients, merchandise parameters and Interns documents.

**Utilitarian.-** In this case permit us the administration of the system, enter or modify the dates such us:

User of the system, administer the user rols, in the Enterprise parameters, count parameters, auditorie, Externs documents forms (SRI), Interns documents forms, codes SRI – Tributaries.

**Accounting.-** Here we can enter, modify, eliminate and give the count reports that we will use in the Enterprise such as:

Count attendances, Close's attendances, close the cash, Banks counts, Banks conciliations, reports SRI, Count reports, clients reports, kardex products reports, diary book, and the general book that is use in order to carry the economic exercise of the enterprise, Initial Situation, effects and final situation.

**Inventories.-**This part permit us examine the invoices of the product that are buying, manage to the clients, also we can examine the credit note, we can give the retention certificate and so make a calculate about the informed and percentage of the SRI.

Permit us modify, eliminate and subtract reports of the products according to the kardex, FIFO, LIFO.

Here we can make:

Buying certificate, business products, buying kardex, products according to the class, sales devolution, clients, and product's list.

**Sale certificate.-**In this case can give a sale certificate to us clients, also we can give give a credit note to the client, and so enter the retention certificate, according to the S.R.I. law.

To permit us to make the next actions:

Products list, clients, sales devolution, groups administration, groups kardex.

**Obligations.-**To permit us to carry an effective control about the certificated transaccions of the each one client.

The actions that permit us to make are:

Another business, credit notes, debit notes, pays to the clients, about the buying and the sales.

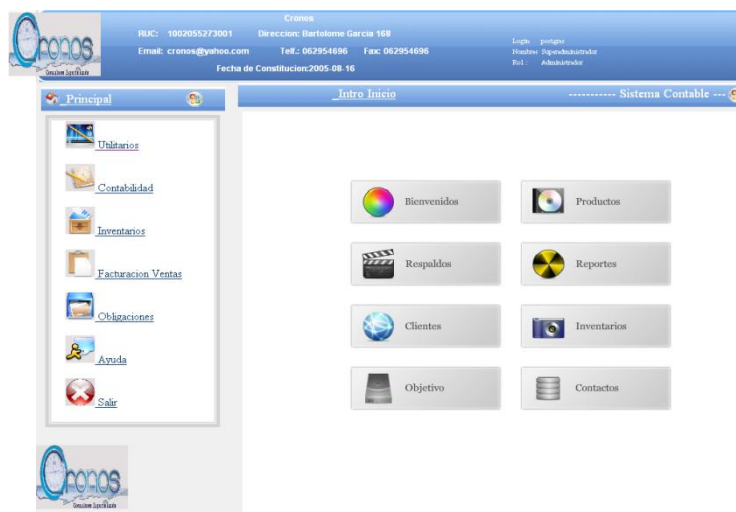
**Help.-** This plan has the system manual of the user form pdf and word.

**Off.-** This plan is used in order to of the count system.

#### **4.- CODING**



This chapter is writes in orden to make the realization the final document's system. Here we determinate the definitive windows, also we make the design's diagrams with the report, also we say the worker's capacitation



## **5.- TEST**



---

This part of the this plan is a part of the count system maked in the enterprice.

In order to have and excellent count system we make the test with all the people that work in this enterprice and so we have the worker´s restlessnesses in the different departments.

This test we make with a plan in all the departments of the enterprice, and so we have an automatic necessities according to the departments.

## **6.- INSTALLATION**



---

We present a report about the system installation, showing the form to continue this system, also we planificate a small contingence plan.

For the installation of this system was necessary the next passes.



## **SERVANT**

- Operative system operation (windows XP service pack 2 o 3)
- Installation of the web Apache version 2.2.8 (MS4W – Map server 4, windows – version 2.2.7)
- Installation of the PHP version 5.2.5 (MS4W – Map server 4, windows – version 2.2.7)
- Installation of the date's Base Postgre SQL version 8.3
- Installation of the count system in the servant and copy the deskpad system contsoft in the next address according to the Mapsver 4 such us C: \programs \MS4W\Apache\htdocs.
- Execute the query of the dates base that are in the desk pad count base.

## **7.- MAINTENANCE**



---

In this chapter we speak about the defects that are in the system after the analysis of the test.

### **7.1.-List of the defects detected in the system**

The defects that we detected are the next:

- Mistake in the scroll rod in some pages
- We can't make the products list in the inicial

- Mistakes in the I.V.A. Retention and the certificate (invoice)

#### **7.2.- List of the best solicitude of the clients.**

They are:

- Enter of the products in the merchandise in the initial situation state.
- Will can import a list of the clients and supply men.
- A list of the enter of a final consumer in the pharametrize in the count system.

**8.- CONCLUSIONS AND REQUESTES.-** Here we detail the conclusions and requestes that are the summary of the this plan in order that the will applycate the suggest in similar plans.

All the information about the bibliography information books are in **BIBLIOGRAPHY** part also there are some **ANNEXES** of the this investigation.

This plan is in UTN authorities consideration, professors, assessors and in general students.

**Authors**