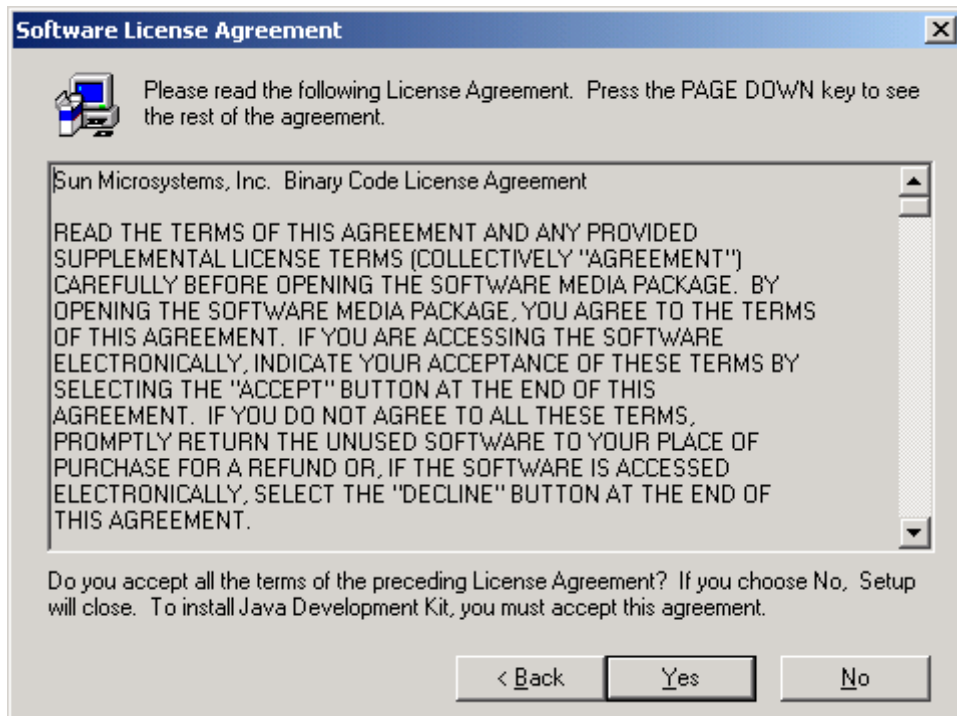
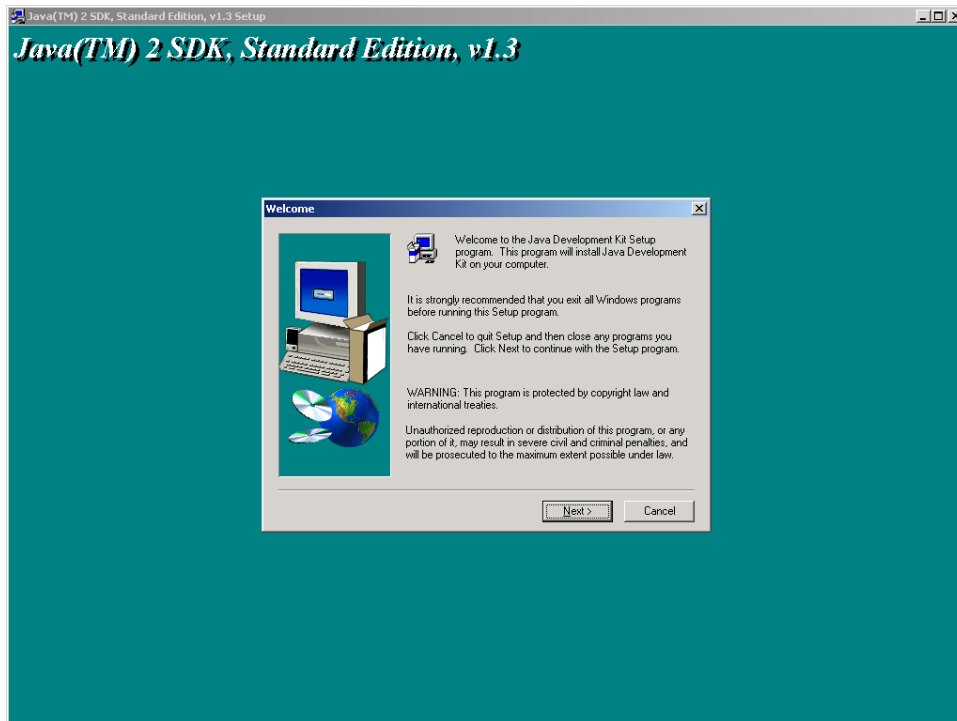
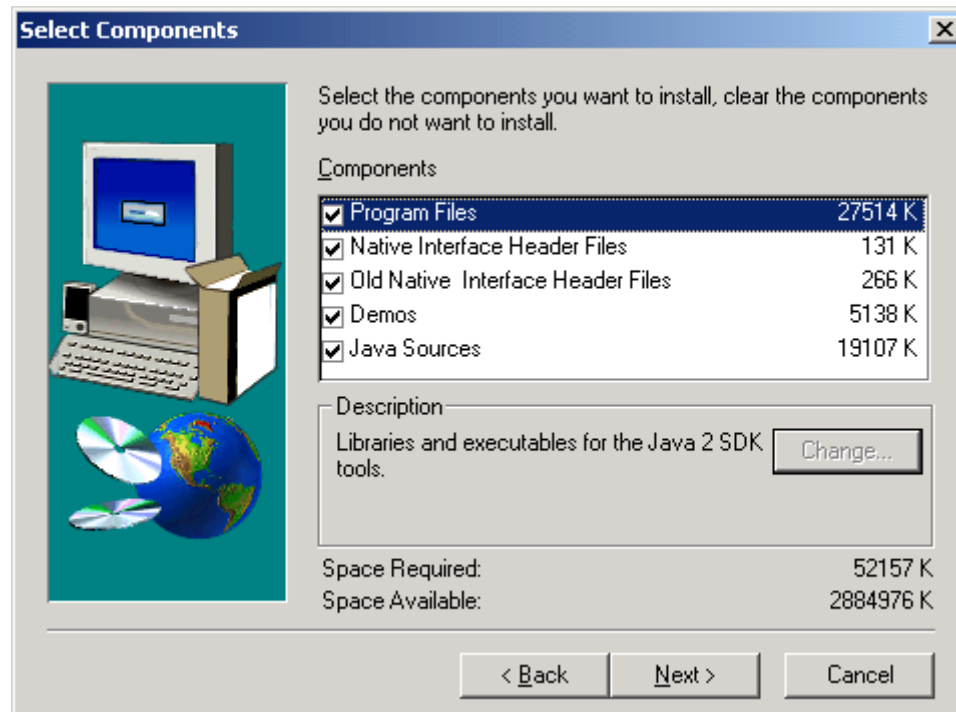
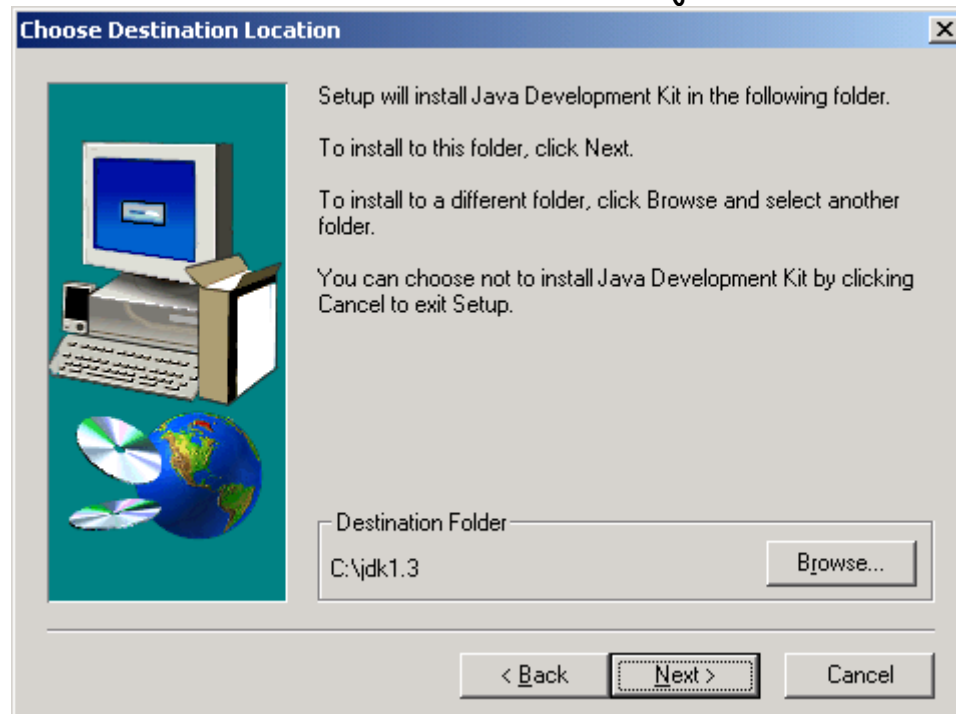


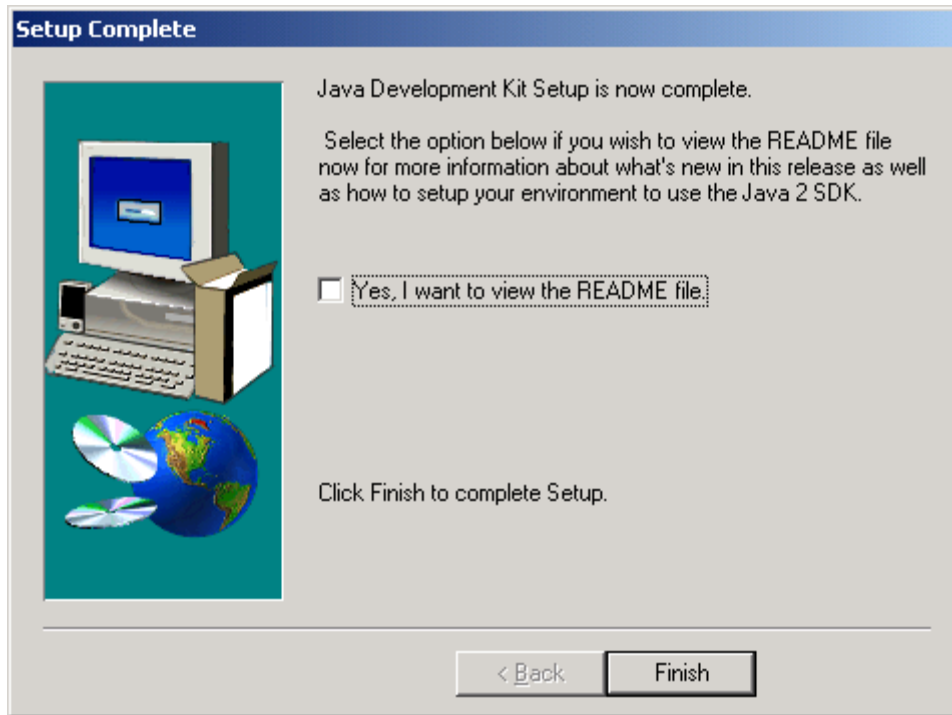
MANUAL DE INSTALACION DEL SERVIDOR

1. Instalación de J2SE versión 1.3, ejecutar j2sdk1_3_0-win

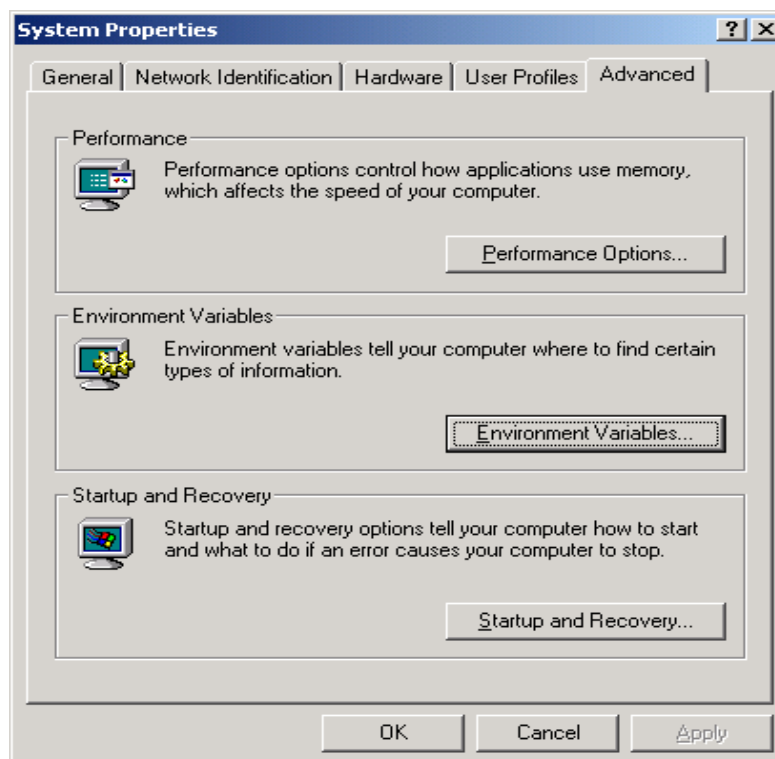


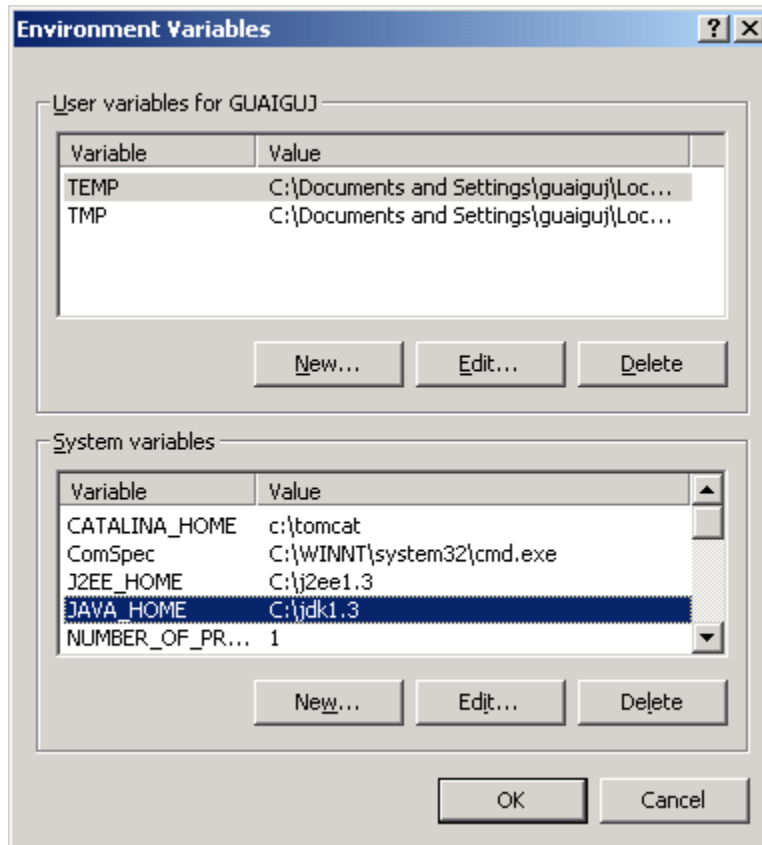
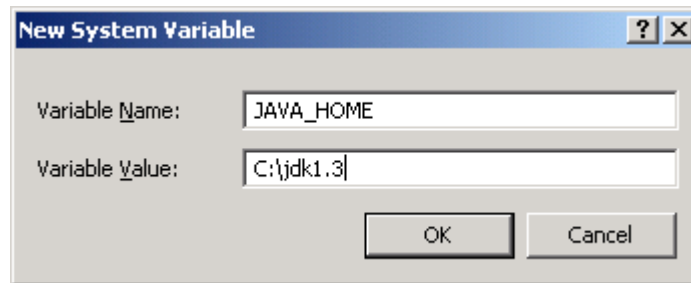
Cambiar el Directorio de instalación a c:\jdk1.3



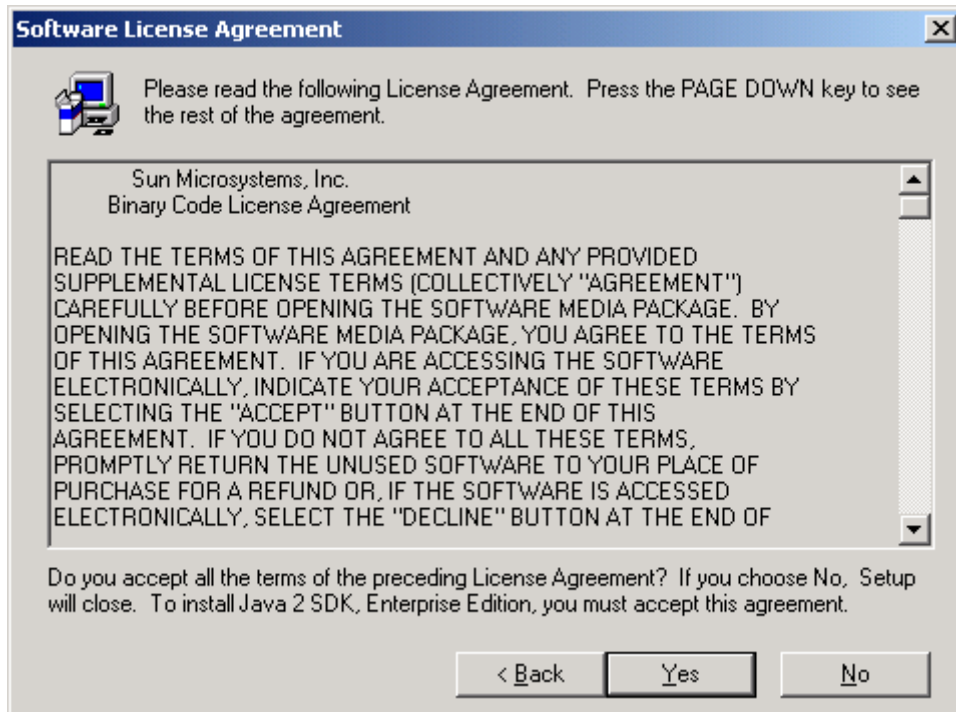
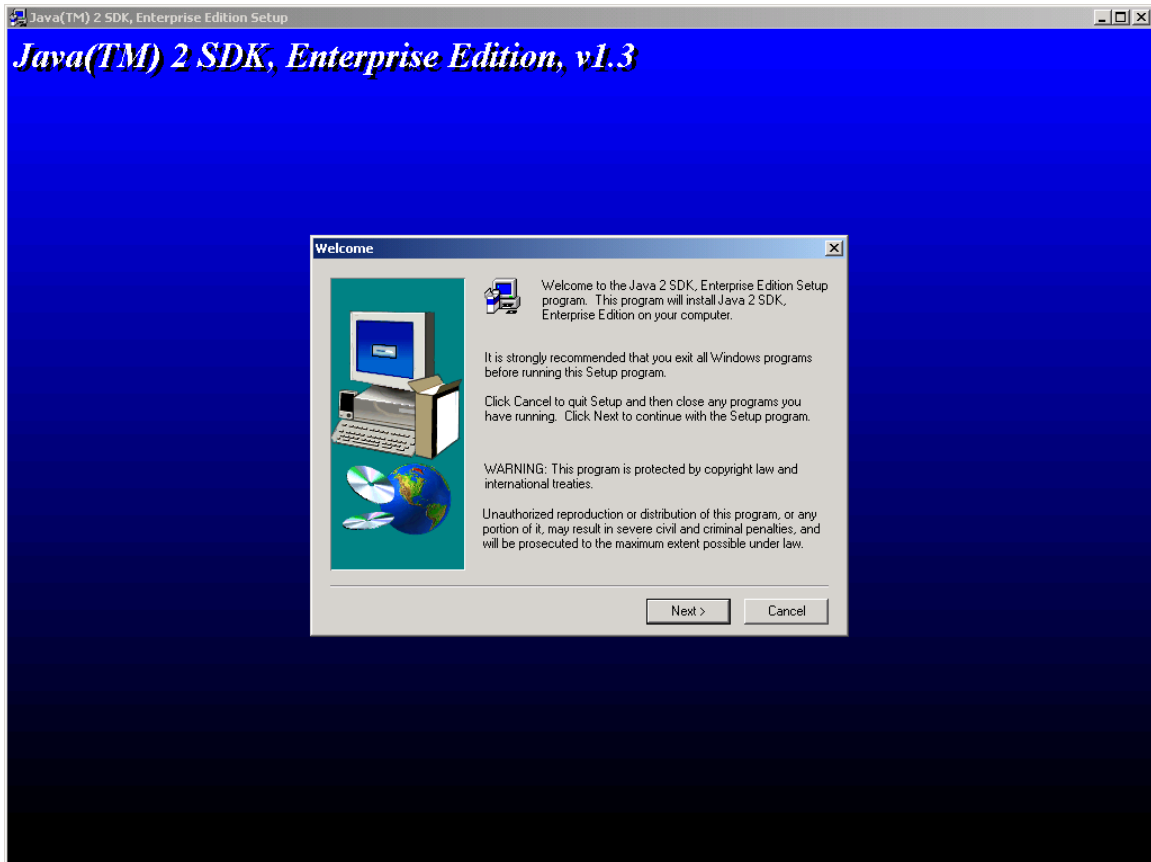


Crear la variable de entorno `JAVA_HOME` en My Computer click/properties/System Properties/Environmet Variables/ en System Variables escoger new/ok/ok.

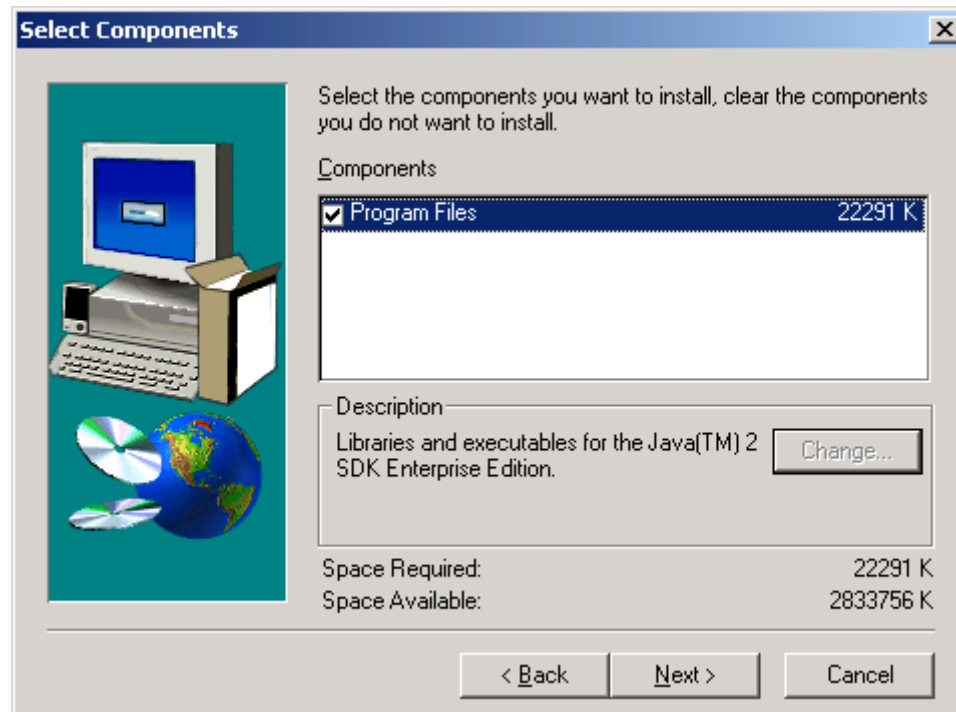
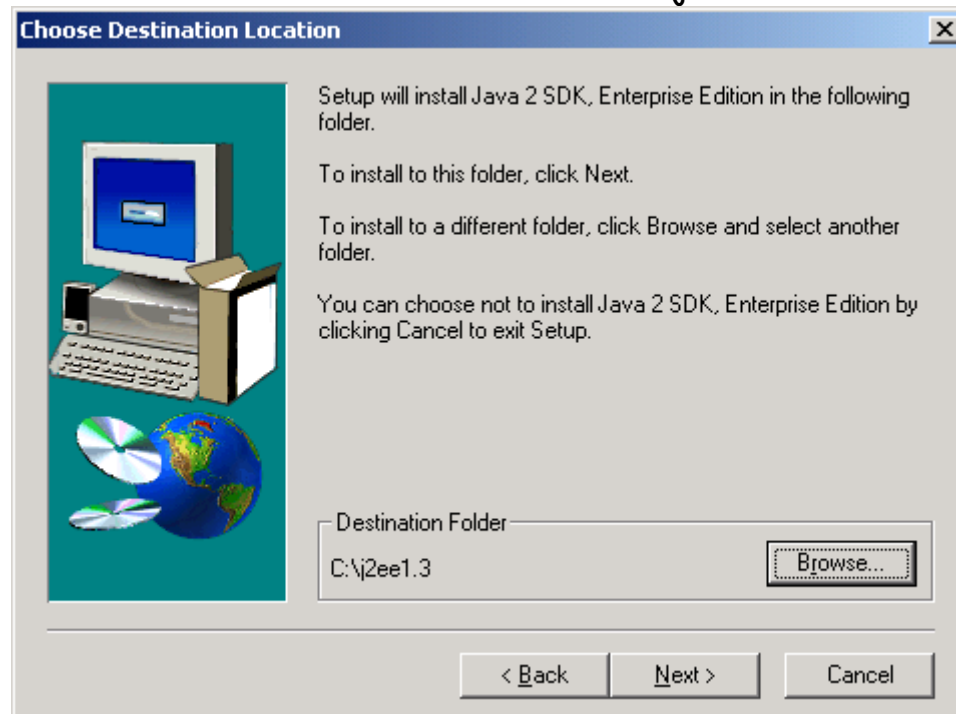


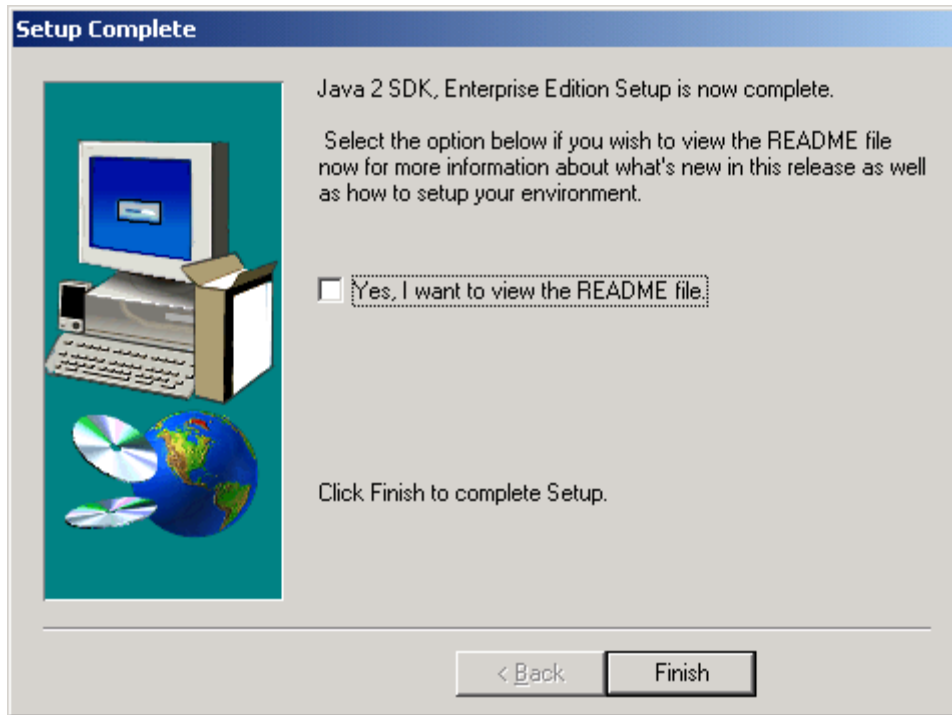


2. Instalación de J2EE ejecutar j2sdkee-1_3_01-win

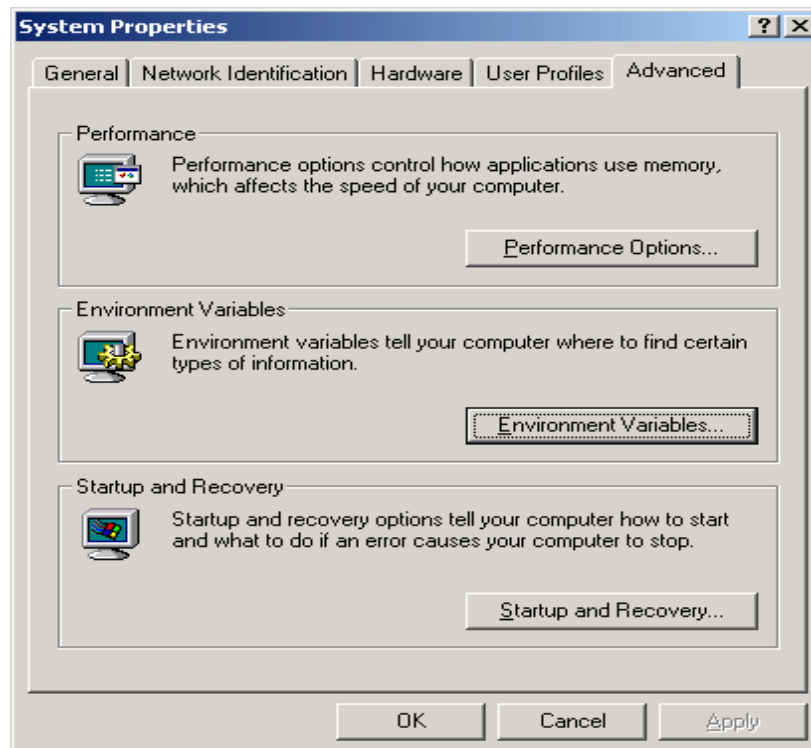


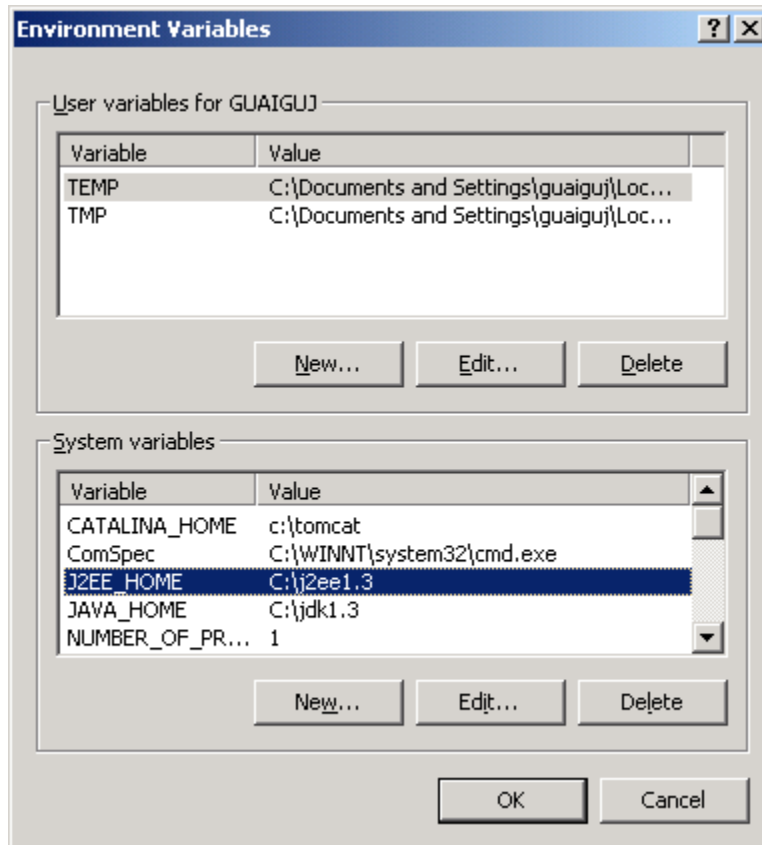
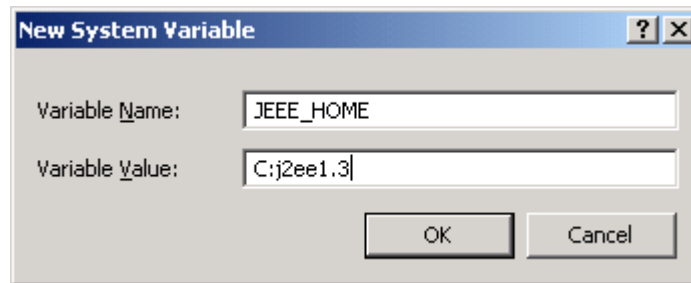
Cambiar el Directorio de instalación a c:\j2ee1.3



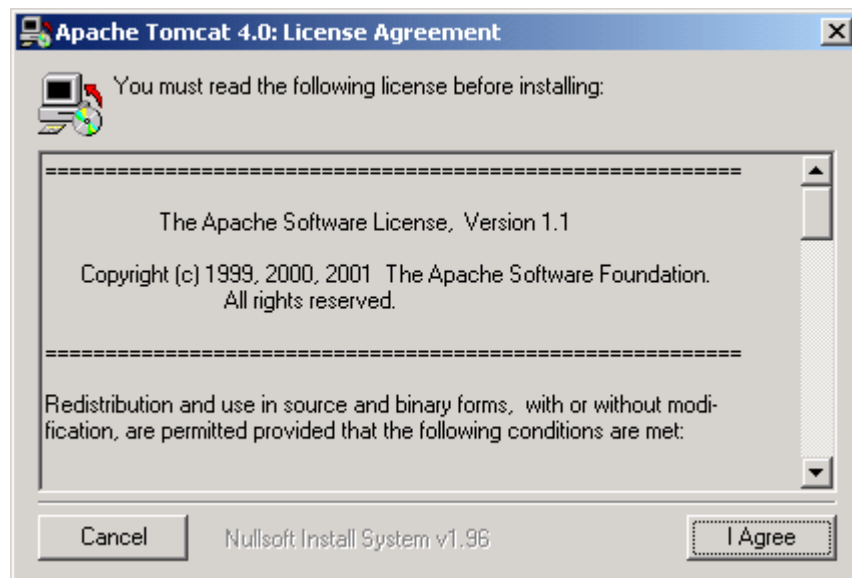
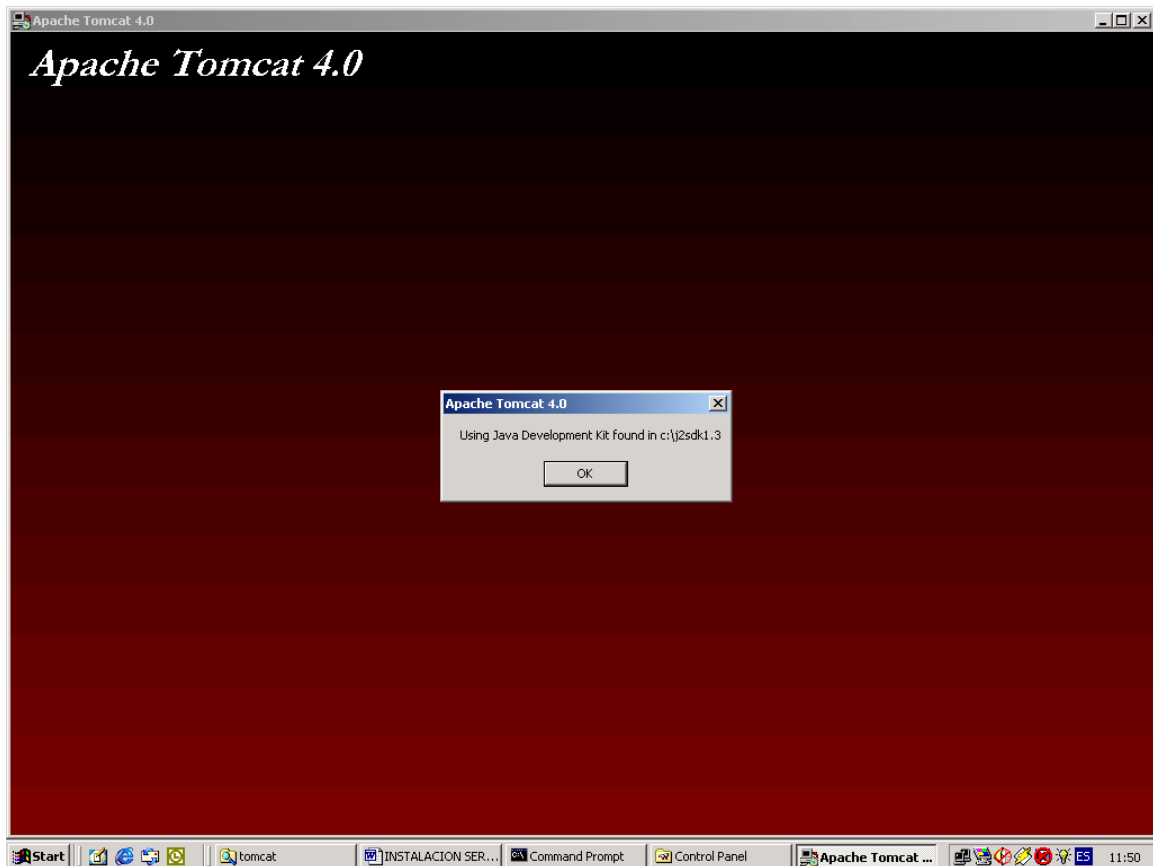


Crear la variable de entorno J2EE_HOME en My Computer click/properties/System Properties/Environmet Variables/ en System Variables escoger new/ok/ok.

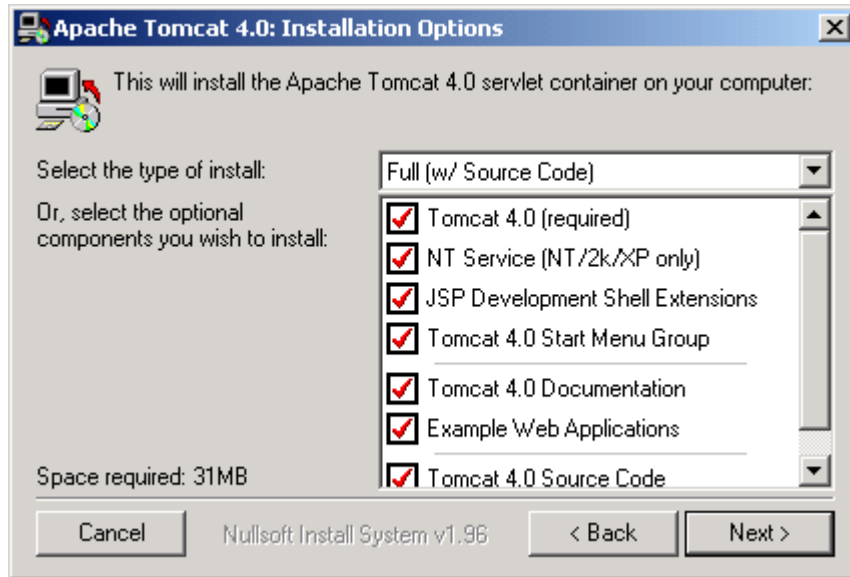




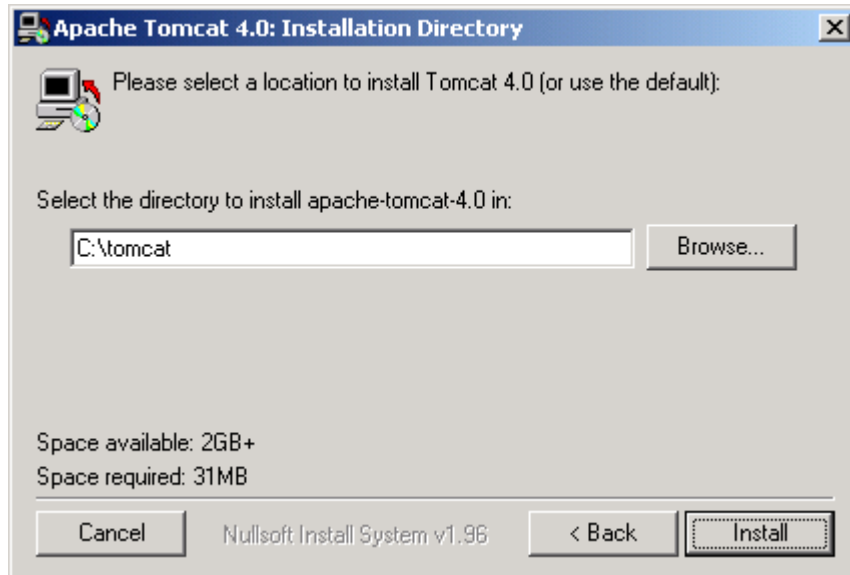
3. Instalar **TOMCAT 4.0.3** ejecutar jakarta-tomcat-4.0.3

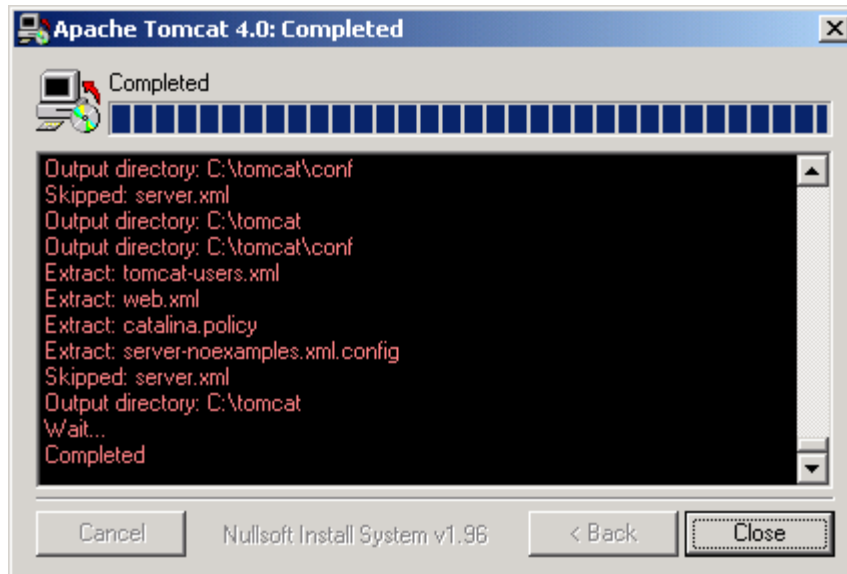


En la siguiente pantalla seleccionar todas las opciones:

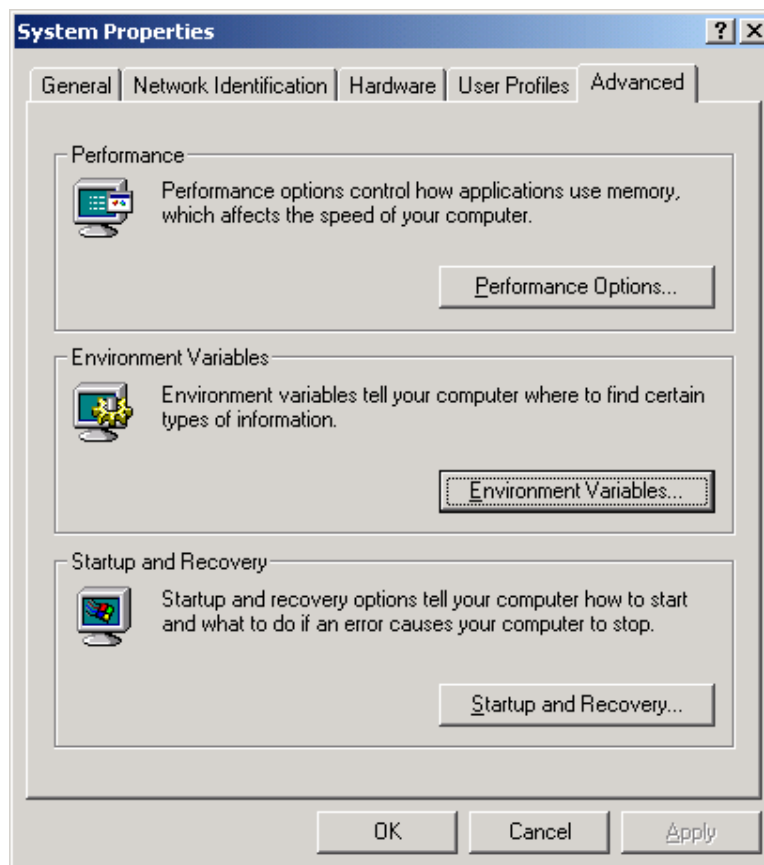


Direccionar el directorio de instalación al c:\tomcat





Crear la variable de entorno TOMCAT_HOME y CATALINA_HOME en My Computer/properties/System Properties/Environmet Variables/ en System Variables escoger new/ok/ok.



New System Variable [?] [X]

Variable Name: TOMCAT_HOME

Variable Value: C:\tomcat

OK Cancel

New System Variable [?] [X]

Variable Name: CATALINA_HOME

Variable Value: C:\tomcat

OK Cancel

Environment Variables [?] [X]

User variables for GUAIGUJ

Variable	Value
TEMP	C:\Documents and Settings\guaigu\Loc...
TMP	C:\Documents and Settings\guaigu\Loc...

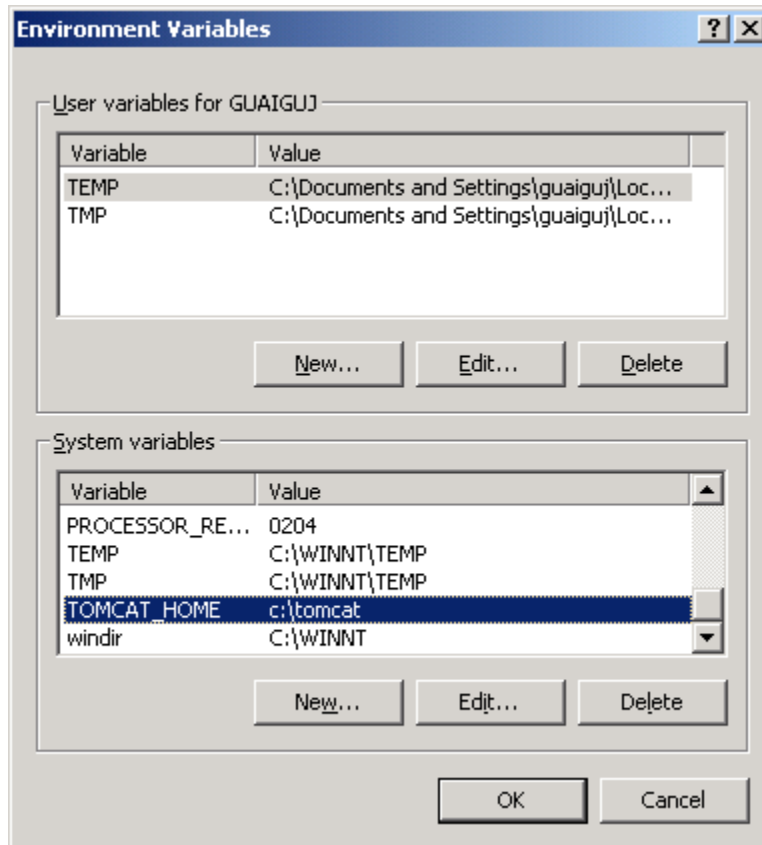
New... Edit... Delete

System variables

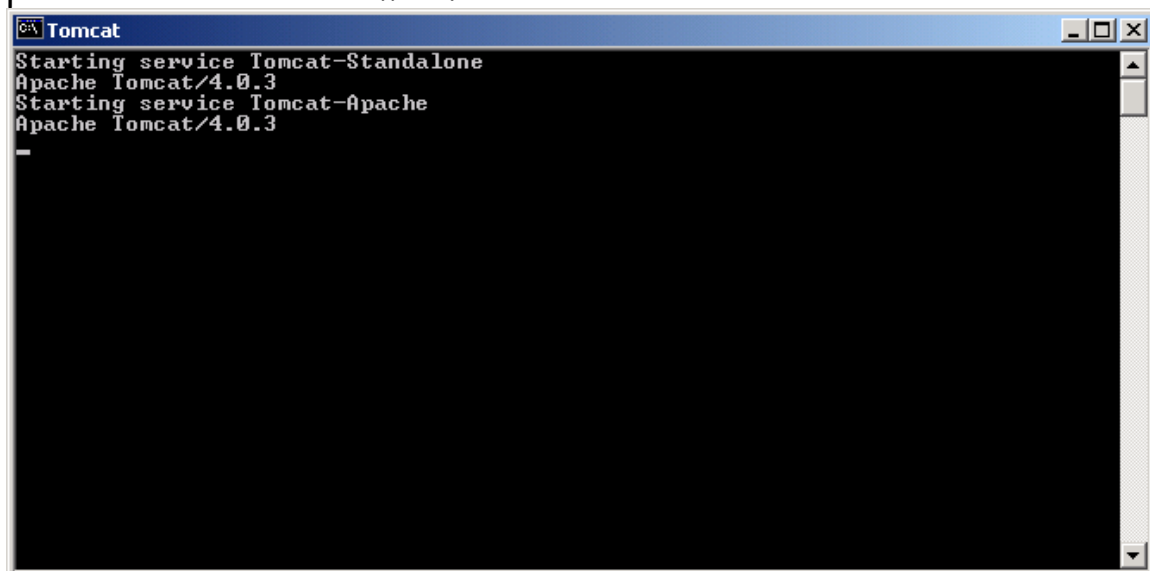
Variable	Value
CATALINA_HOME	c:\tomcat
ComSpec	C:\WINNT\system32\cmd.exe
J2EE_HOME	C:\j2ee1.3
JAVA_HOME	C:\jdk1.3
NUMBER_OF_PR...	1

New... Edit... Delete

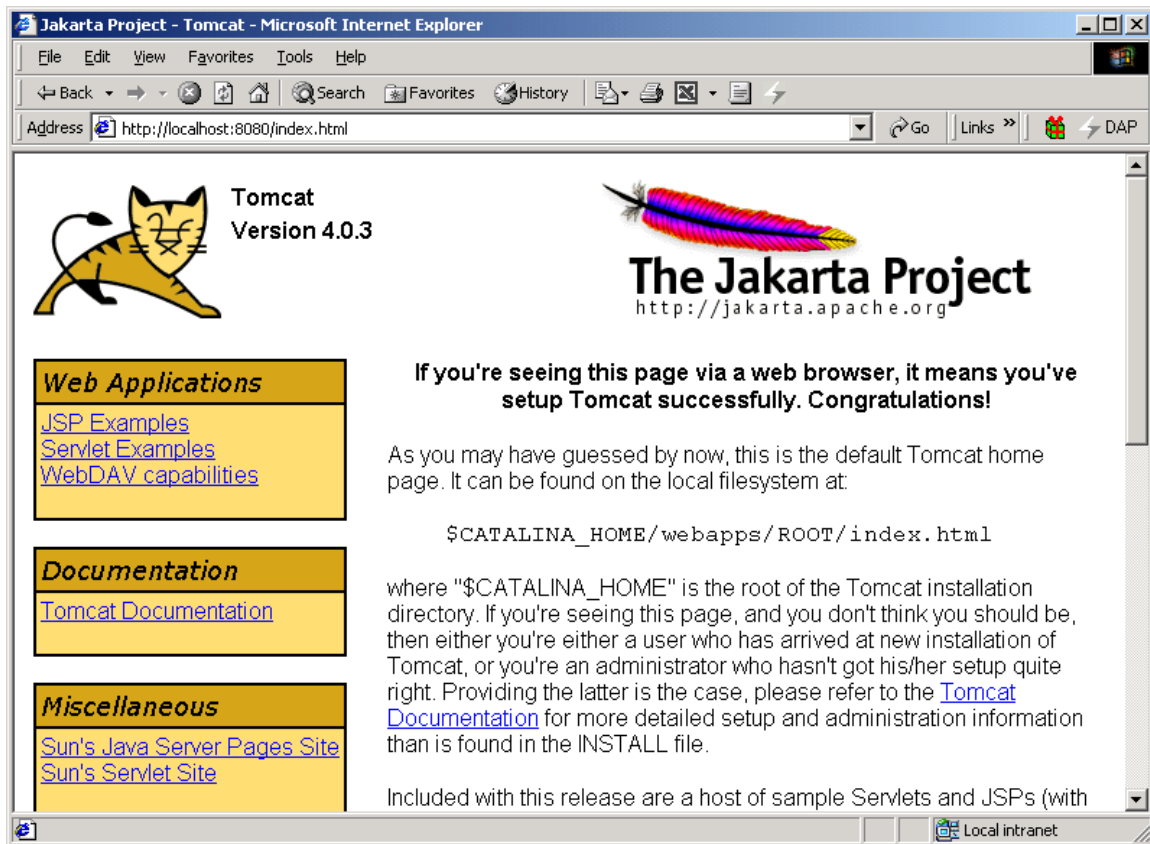
OK Cancel



Una vez instalado Java y Tomcat verificar que todo este funcionando:
Iniciar tomcat dando doble click en c:\tomcat\bin\startup, presenta la pantalla de inicio de tomcat.



Abrir internet con la direccion: <http://localhost:8080>



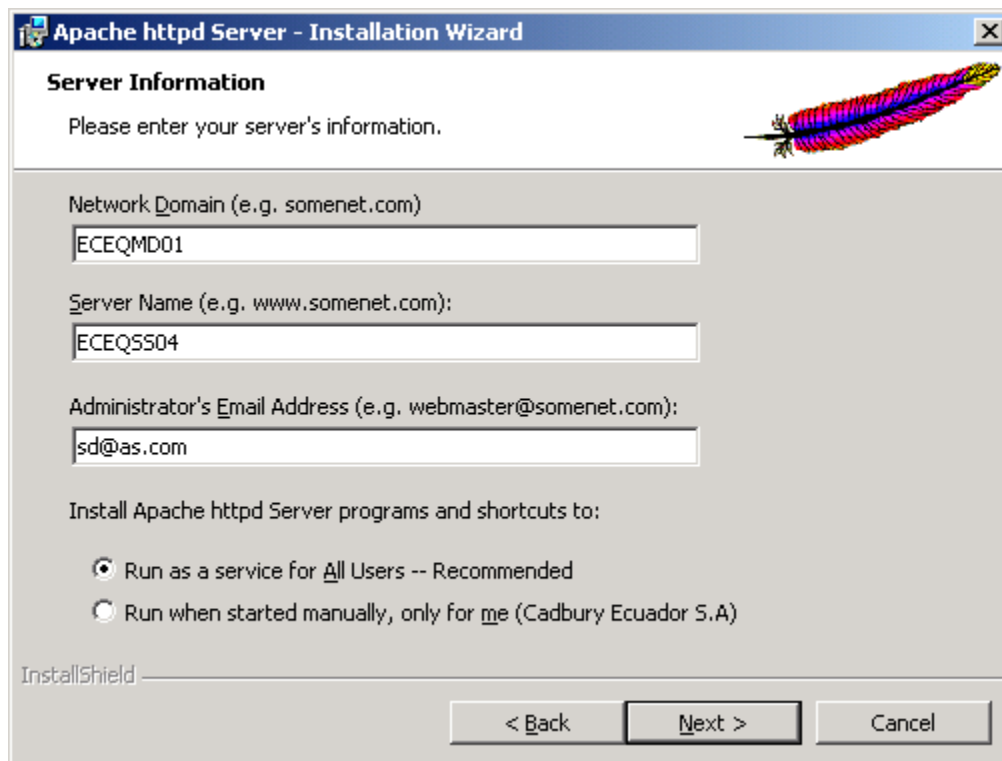
Ingresar a servlet Examples y verificar que corran los ejemplos.

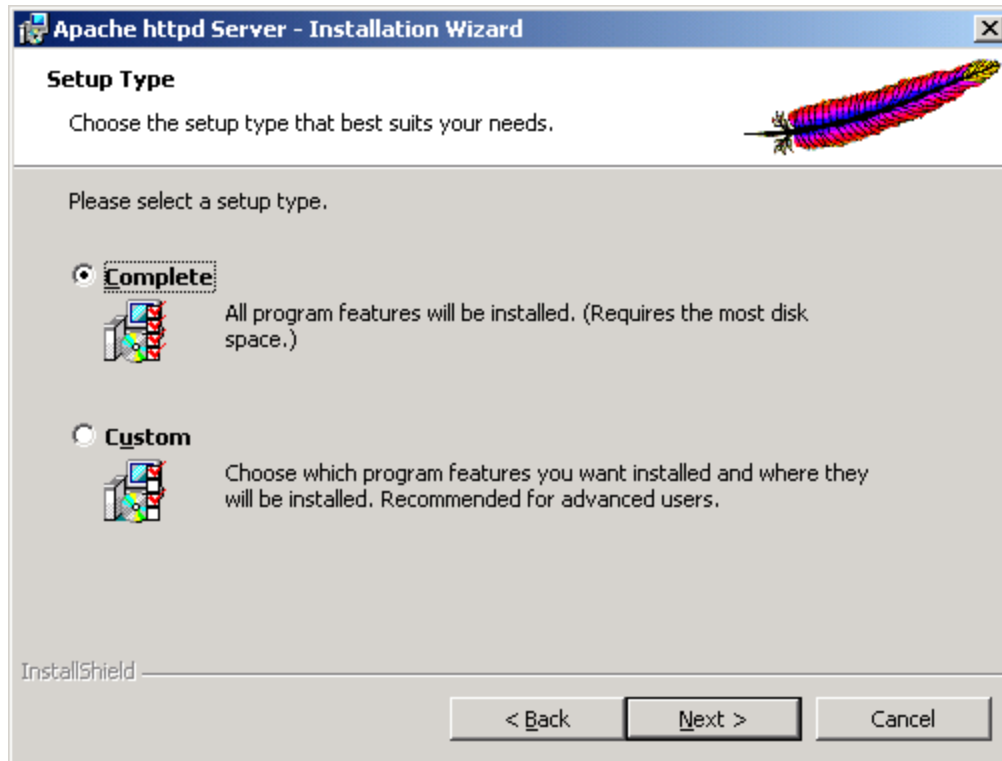
Detener tomcat dando doble click en:

C:\tomcat\bin\shutdown

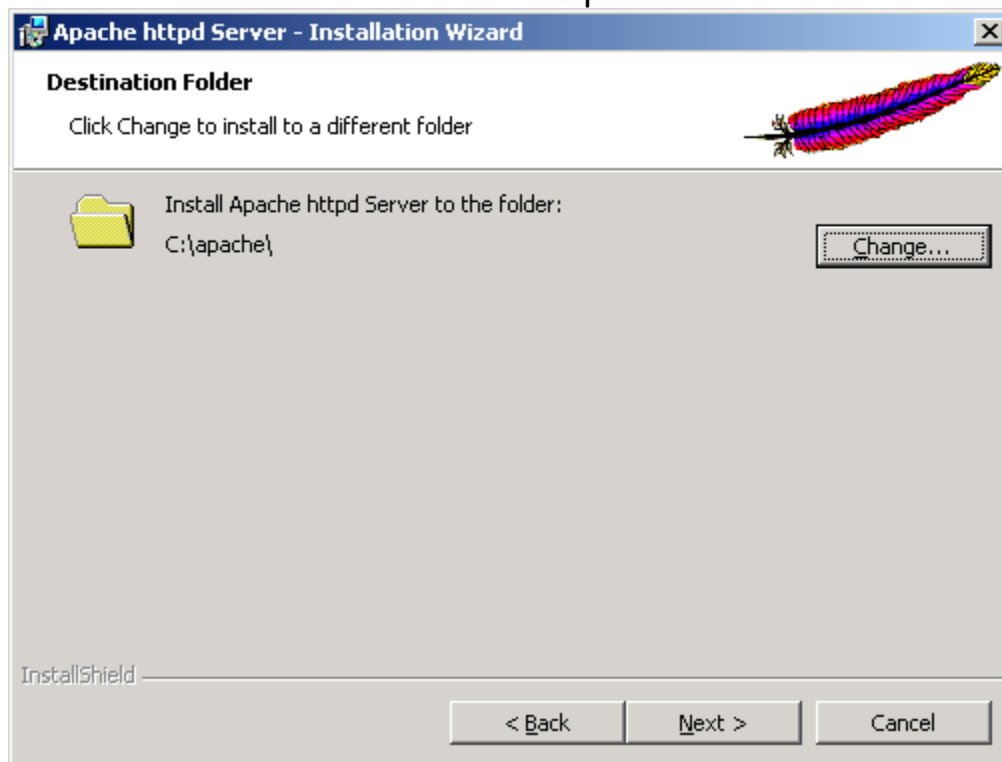
4. Instalación de Apache Server

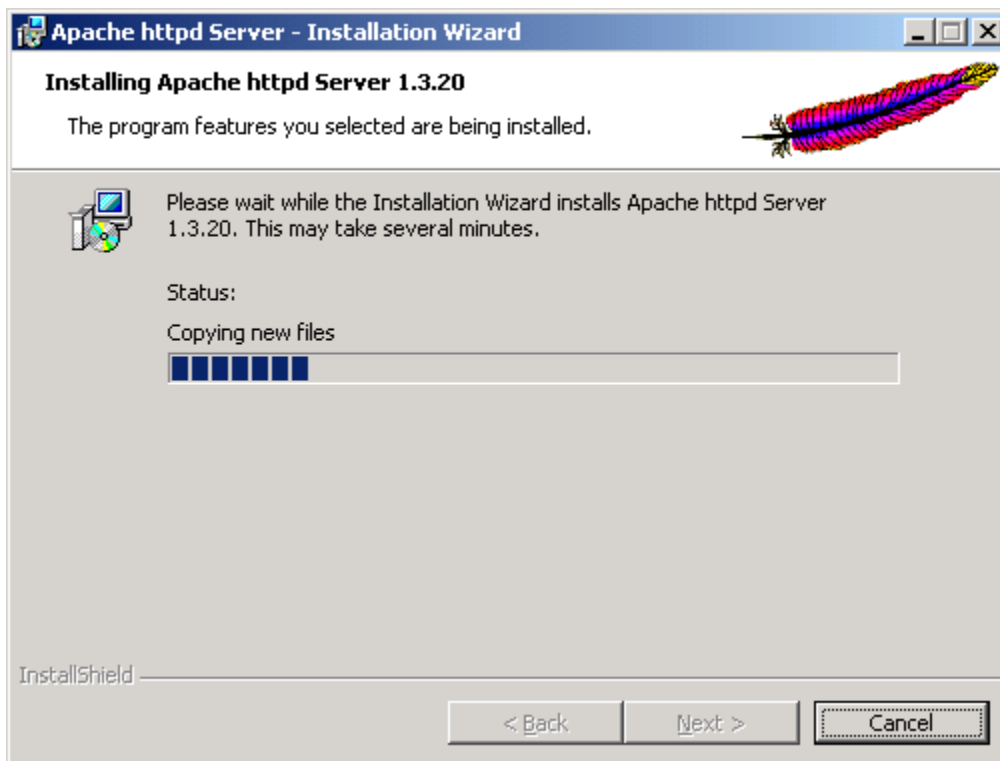
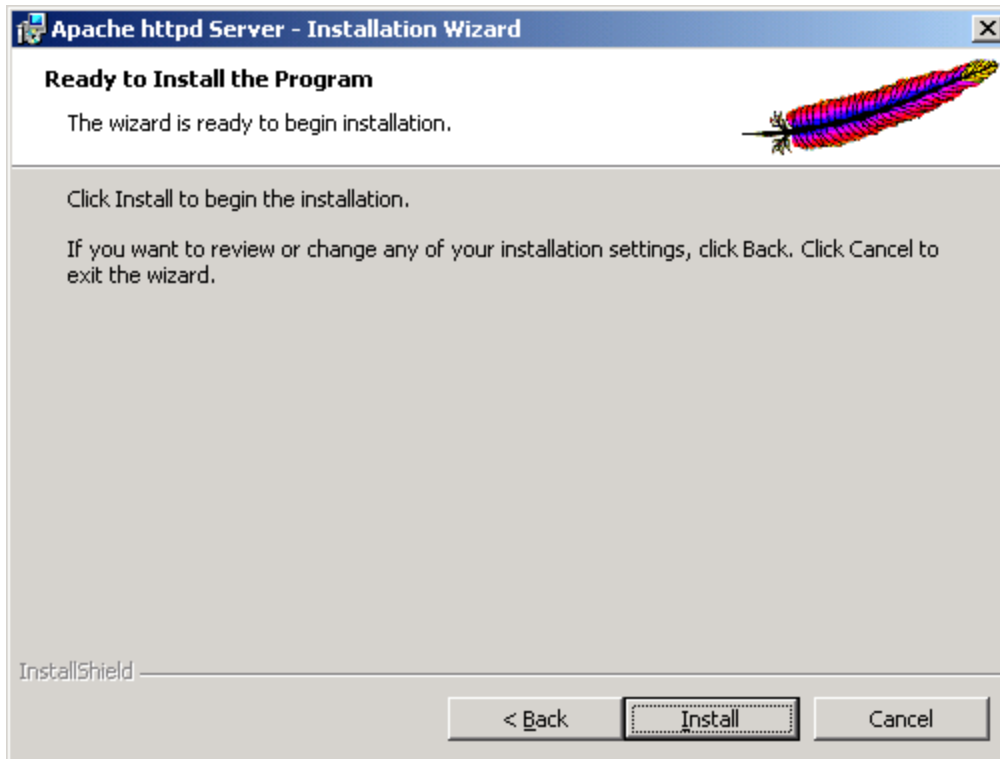


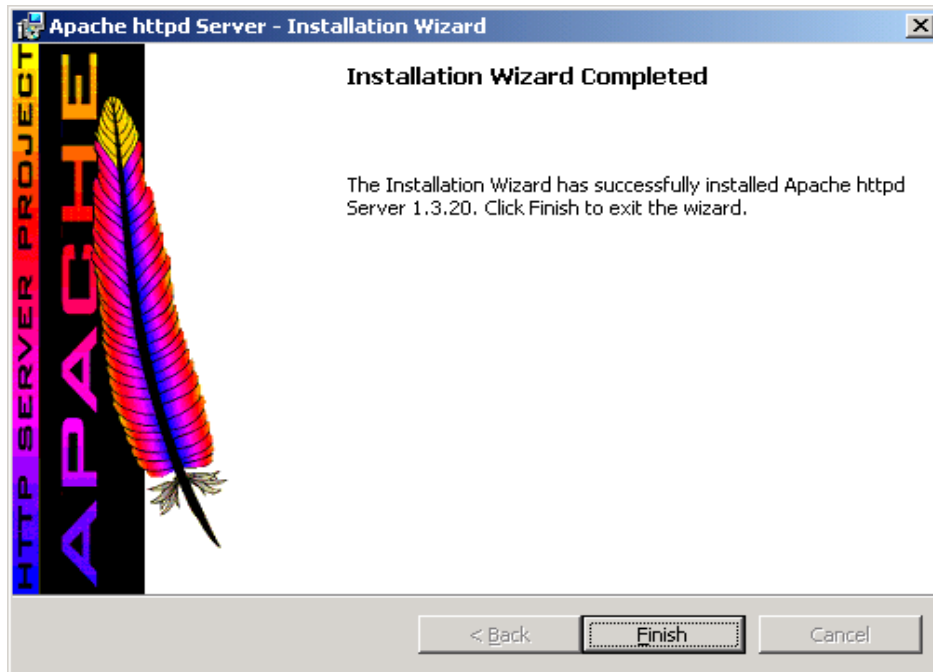




Cambiar el directorio de instalación c:\apache





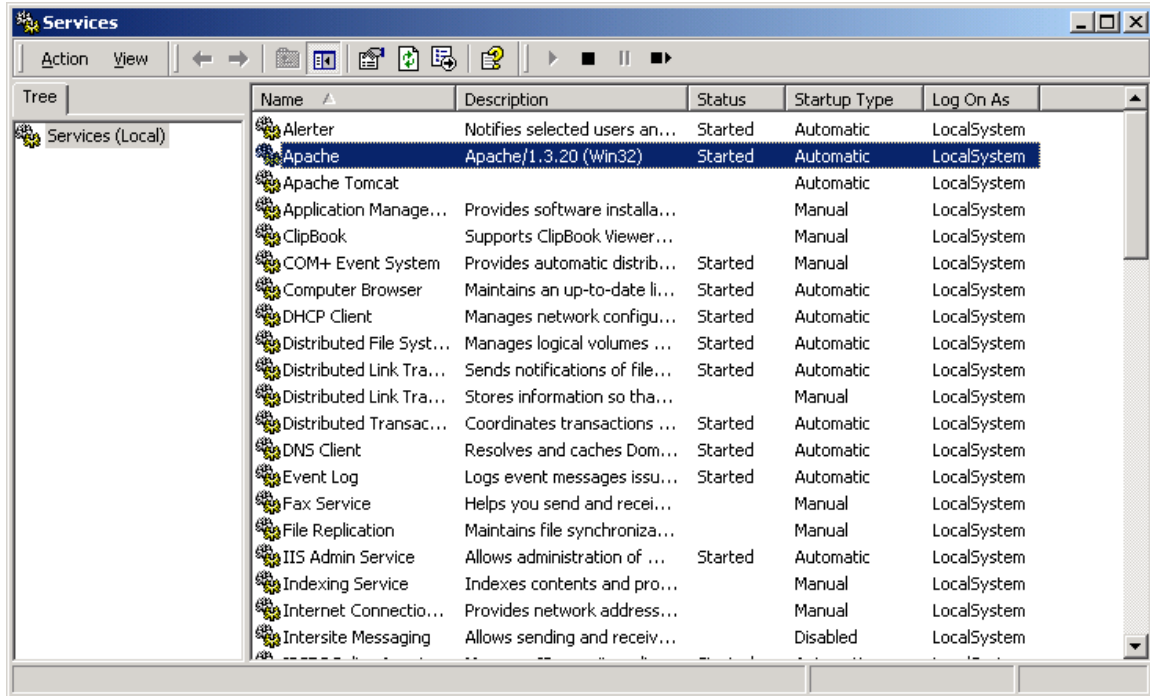


una vez instalado el Servidor apache verificar que este funcionando, abrir internet con la dirección: <http://localhost>



5. Configuraciones necesarias

Una vez instalado el software necesario detener el servicio Apache Server:



- a- Copiar del cd el archivo *tomcat.conf* a **c:\tomcat\conf**
- b- Copiar del cd el archivo *ApacheModuleJServ.dll* a :
c:\apache\apache\modules
- c- Abrir en un editor de texto el archivo:
c:\tomcat\conf\tomcat.conf
y copiar el contenido de este archivo, al final del siguiente archivo, (el cual también se abrirá en un editor de texto)
c:\apache\apache\conf\httpd.conf
- d- Borrar el contenido de la carpeta **c:\tomcat\webapps\root**
- e- Copiar del CD el contenido de la carpeta *root* al:
c:\tomcat\webapps\root.
- f- Levantar nuevamente los servicios de Apache Server y Apache Tomcat.

