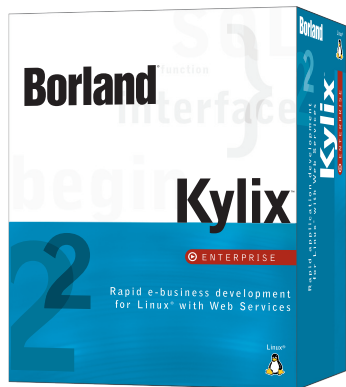
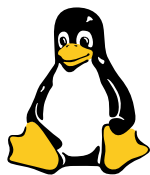


Borland®



Key features

- BizSnap™ for simplified business-to-business integration with Web Services
- WebSnap™ for fast Web application development
- DataSnap™ for integrated data-access solutions through Web Services-enabled middleware
- Easy building of cross-platform Linux®/Windows® applications
- Industry-standard compliance with SOAP, XML, WSDL, and more
- Apache™ Web server development
- Royalty-free deployment of applications
- Support for Oracle®, Informix®, DB2®, Borland® InterBase®, PostgreSQL, and MySQL™



Rapid e-business development for Linux® with Web Services

The emergence of Linux®

With its reliability, scalability, open platform, and low cost of ownership, Linux is emerging as the fastest growing globally adopted operating system. Users have reported considerable success deploying Linux as an Internet-related server, from Web and firewall servers to page-caching servers. In particular, Linux has been used to turn older systems with minimum resources into inexpensive Web servers, domain name servers, and e-mail servers. In this way, Linux has become a popular development and production platform for many Internet and Web-hosting service providers.

Leading-edge development with Borland® Kylix™ and Web Services

Historically, developing applications for Linux using conventional tools has been a challenge. Traditional GCC and eMacs are difficult to learn and do not provide the degree of productivity demanded by corporate developers. Kylix changes that. Kylix introduces to the Linux operating system rapid e-business development with Web Services, providing a complement of powerful standards-based tools to control and deliver business data.

As Linux continues to emerge as the fastest growing operating system for servers, the advantages of Web Services and the Apache™ Web server can help accelerate

the adoption of the Linux platform as an e-business server. Increasingly, companies are looking to the benefits of Web Services as a way to leverage the Internet to connect and integrate with their customers, suppliers, business partners, and employees across the world and across diverse platforms and technologies.

- **BizSnap™**, the Kylix Web Services development platform, simplifies business-to-business (B2B) integration by easily creating industry-standard SOAP/XML Web Services and connections that seamlessly integrate your business with the applications of your customers and suppliers.
- **WebSnap™**, the component-based Web application development platform of Kylix, delivers power, speed, and efficiency to your development process.
- **DataSnap™** enables developers to build Web Services-enabled data-access middleware solutions that integrate with any business process and any business partner.

With its leading-edge development environment, integrated debugger, intuitive visual designer, comprehensive component suite, and Web Services development platform, Kylix delivers the tools needed to quickly and easily develop e-business applications with Web Services for the Linux platform.

Kylix™

BizSnap™ delivers business-to-business Web Services integration

BizSnap expands the capabilities of the Linux operating system and the Apache™ Web server with e-business XML and Web Services capabilities. BizSnap makes it easy to exchange, transform, and manipulate XML documents, giving you the flexibility and extensibility to move your business into the next wave of B2B e-commerce. Kylix conforms to industry standards, enabling you to respond confidently to ever-changing business needs. Kylix lets you communicate seamlessly with the various applications of your trading partners who run their systems on standards-based Web Services-enabled platforms such as .Net™ and BizTalk™ from Microsoft and ONE from Sun Microsystems.

WebSnap™ brings power and speed to Web application development

WebSnap turns Apache Web servers into powerful enterprise-class, database-driven Web application servers. WebSnap delivers the power and speed of component-based Rapid Application Development (RAD) to your Apache Web application development, increasing the efficiency of your team and the reliability of your code. WebSnap object's JavaScript® support allows for easy server-side customization and seamless Web application integration into corporate sites and Web portals developed with popular HTML site-development tools such as Microsoft® FrontPage® and Macromedia® Dreamweaver®.

DataSnap™ lets you build high-performance, Web Services-enabled middleware

DataSnap leverages all the standards for distributed computing, such as SOAP, XML, and HTTP, to smooth the integration of your existing enterprise databases, applications, and objects with your e-commerce applications. This standards support means that Kylix applications can fluidly integrate and interoperate with many business processes and Web Services-enabled business partners. DataSnap gives you high-performance access to DB2®,

Informix®, Borland® InterBase®, MySQL™, PostgreSQL, and Oracle® databases. DataSnap optimizes valuable RDBMS server connections and bandwidth by centralizing data access and updates among e-business processes and applications. DataSnap delivers comprehensive data-access solutions—applications that scale as your volume of transactions and number of users grow.

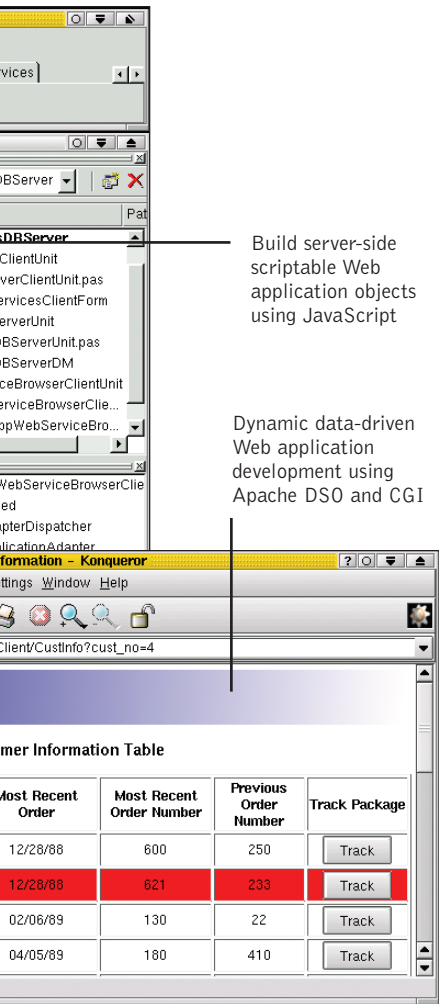
Enter new markets with cross-platform development for Windows® and Linux®

Exploit the power of component-based development with the Borland Component Library for Cross-platform (CLX™) development. The CLX development library delivers a comprehensive palette of more than 165 reusable, customizable, and extensible components for rapidly building Internet, database, and GUI applications.

The screenshot shows the Kylix 2 IDE with a web application project. The main window displays an XML page with a welcome message and login/logout links. A 'WebServices DB Client' window is open, showing a table of customer data. A 'Furniture Warehouse' web page is also visible in the background.

CustNo	Customer Name	Credit Line	Most Recent Order
2	Nelson, Robert	105900	12/28/88
4	Young, Bruce	97500	12/28/88
5	Lambert, Kim	102750	02/06/89
8	Johnson, Leslie	64635	04/05/89
9	Forest, Phil	75060	04/17/89
11	Weston, K. J.	86292.93	01/17/90

Easily import Web Services and add them to your application functionality



InterBase, and MySQL. Prototype your data-centric applications quickly using the rich set of data-aware GUI components in Kylix. Optimize the performance and responsiveness of your database applications with the SQL monitor and other debugging components.

Maximize flexibility and simplicity with MyBase™ personal XML database

MyBase is a small-footprint, local XML database engine for fast in-memory performance, flexible data exchange, and simple zero-configuration setup and deployment. MyBase offers transparent application scalability and data migration to and from any Kylix-supported RDBMS. MyBase supports internally linkable master/detail table relationships and all popular data types, including Blobs. MyBase uses ANSI 92 SQL syntax for filters, live aggregates, and data constraints for powerful SQL RDBMS-like capabilities with fast, easy-to-use, and easy-to-deploy XML format tables.

Deploy royalty-free applications

Applications created using Kylix are free of runtime royalty fees (with the exception of DataSnap servers). Kylix applications run on minimally configured, Linux-based systems. The small, robust executable files generated by Kylix provide fast and efficient Linux solutions.

Implement enterprise-class e-business solutions

Thanks to its integration with Borland AppServer™ 4.5, Kylix allows you to meet the rigorous demands of global e-business customers. Kylix quickly and efficiently delivers high-performance thin/rich GUI and WebSnap browser clients to Borland AppServer applications. Bridge Borland AppServer applications for Enterprise JavaBeans™ (EJB™) across the Internet and directly to your customers and suppliers using the BizSnap, WebSnap, and DataSnap e-business tools and XML/SOAP Web Services. The powerful, platform-independent Borland AppServer provides clustering, load balancing, and back-end integration for your entire enterprise.

Develop and deploy in a heterogeneous environment

With Borland VisiBroker® for Kylix, the leading CORBA® ORB™, you have the openness and flexibility to develop and deploy applications in heterogeneous environments. VisiBroker provides the scalability required by applications distributed across intranets, extranets, and the Internet itself. The sophisticated resource management inherent in all applications built with VisiBroker means that the size and scope of an application is limited only by the needs and requirements of your organization.

Build an optimized turnkey system with Borland InterBase®

With Kylix and InterBase, high-productivity, high-performance development is combined with a fast, low-maintenance, small-footprint relational database. InterBase is the open-source, commercial-quality relational database from Borland that combines ease of use with low maintenance costs and enterprise power. InterBase quickly delivers and deploys high-performance systems.

Minimum system requirements (Kylix 2 Enterprise)

- Intel® Pentium® II 400 MHz
- 128 MB RAM
- CD-ROM drive
- 225 MB hard disk space for full install
- VGA or higher resolution monitor
- Mouse or other pointing device

Certified Linux® distributions

- Red Hat® 7.1
- Mandrake™ 8.0
- SuSE® 7.2

Borland Professional Services

Ensure that the investments you make in Borland technology meet your business objectives. Among other benefits, Borland technologies and services drastically reduce time to deployment. The Borland Professional Services organization helps focus the full strength and value of our specialized knowledge and experience onto the challenges facing your business. For more information, please visit www.borland.com.

Combine Kylix with Borland Delphi™ 6, a leading RAD environment for the Windows development platform, to use one set of skills and one code base to develop cross-platform Linux/Windows applications. Easily build high-performance applications for both platforms, allowing maximum ROI and true platform portability.

Connect easily to your corporate databases

Easily integrate corporate information into your applications with dbExpress™ high-speed database drivers for Oracle, Informix, DB2,

Kylix™ features

	Open	Professional	Enterprise
High-performance Linux® application development			
Powerful visual development with Borland® Two-Way-Tools™ for building applications	✓	✓	✓
High-performance 32-bit optimizing compiler for producing ELF and shared-object executable files	✓	✓	✓
Fully integrated debugger with color syntax highlighting and advanced breakpoint actions	✓	✓	✓
BizSnap™ e-business development platform with Web Services			
Build industry-standard Web Services and consumers of Web Services using XML, SOAP, WSDL, and more			✓
XML schema transformation tools and components—produce, transform, and train your application to recognize new XML formats to exchange data with any business partner			✓
WebSnap™ complete Web application development platform based on NetCLX™			
Develop Apache™ DSO and CGI applications with NetCLX		✓	✓
WebSnap components for meeting a wide variety of Web application needs			✓
Server-side scripting with JavaScript®			✓
WebSnap surface designer for fast component-based page construction			✓
DataSnap™ e-business data-access middleware services			
Web Services-enabled, scalable database middleware for GUI, Web, and Web Services clients			✓
Web Services-enable enterprise-class databases with SOAP and XML: Oracle,® DB2,® Informix,® Borland InterBase,® and more!			✓
Borland enterprise platform development			
CORBA® client and server wizards for Borland VisiBroker® 4.x			✓
SIDL links to Borland AppServer™—build rich Kylix GUI and Web Services clients for EJB™			✓
CLX,™ the Component Library for Cross-platform development			
More than ___ CLX components for rapid application development	70+	165+	190+
Single-source code compatibility with Borland Delphi™ 6 for Windows®	✓	✓	✓
BaseCLX™ tool box classes	✓	✓	✓
DataCLX™ data-access components with dbExpress™		✓	✓
VisualCLX™ GUI display components	✓	✓	✓
High-performance database development			
dbExpress high-performance database driver interface for open access to database engines		✓	✓
Rich data-aware GUI component set to build powerful database applications		✓	✓
MyBase™ personal XML database		✓	✓
High-performance dbExpress native SQL drivers for Oracle, Informix, and DB2			✓
SQL monitor component to test, debug, and tune SQL applications for optimal performance		✓	✓
Advanced application-side transaction caching for optimized RDBMS server connectivity		✓	✓
Master/detail provider and resolver support		✓	✓
High-performance dbExpress native SQL drivers for InterBase and MySQL™		✓	✓

Borland®

100 Enterprise Way
 Scotts Valley, California 95066-3249
 www.borland.com | 831-431-1000

Made in Borland® Copyright © 2001 Borland Software Corporation. All rights reserved. All Borland brand and product names are trademarks or registered trademarks of Borland Software Corporation in the United States and other countries. Corporate Headquarters: 100 Enterprise Way, Scotts Valley, CA 95066-3249 • 831-431-1000 • www.borland.com • Offices in: Australia, Brazil, Canada, Czech Republic, France, Germany, Hong Kong, Hungary, Ireland, Japan, Korea, the Netherlands, New Zealand, Russia, Singapore, Sweden, Taiwan, the United Kingdom, and the United States. Linux is a registered trademark of Linus Torvalds. All other marks are the property of their respective owners. • 11724.3

data sheet